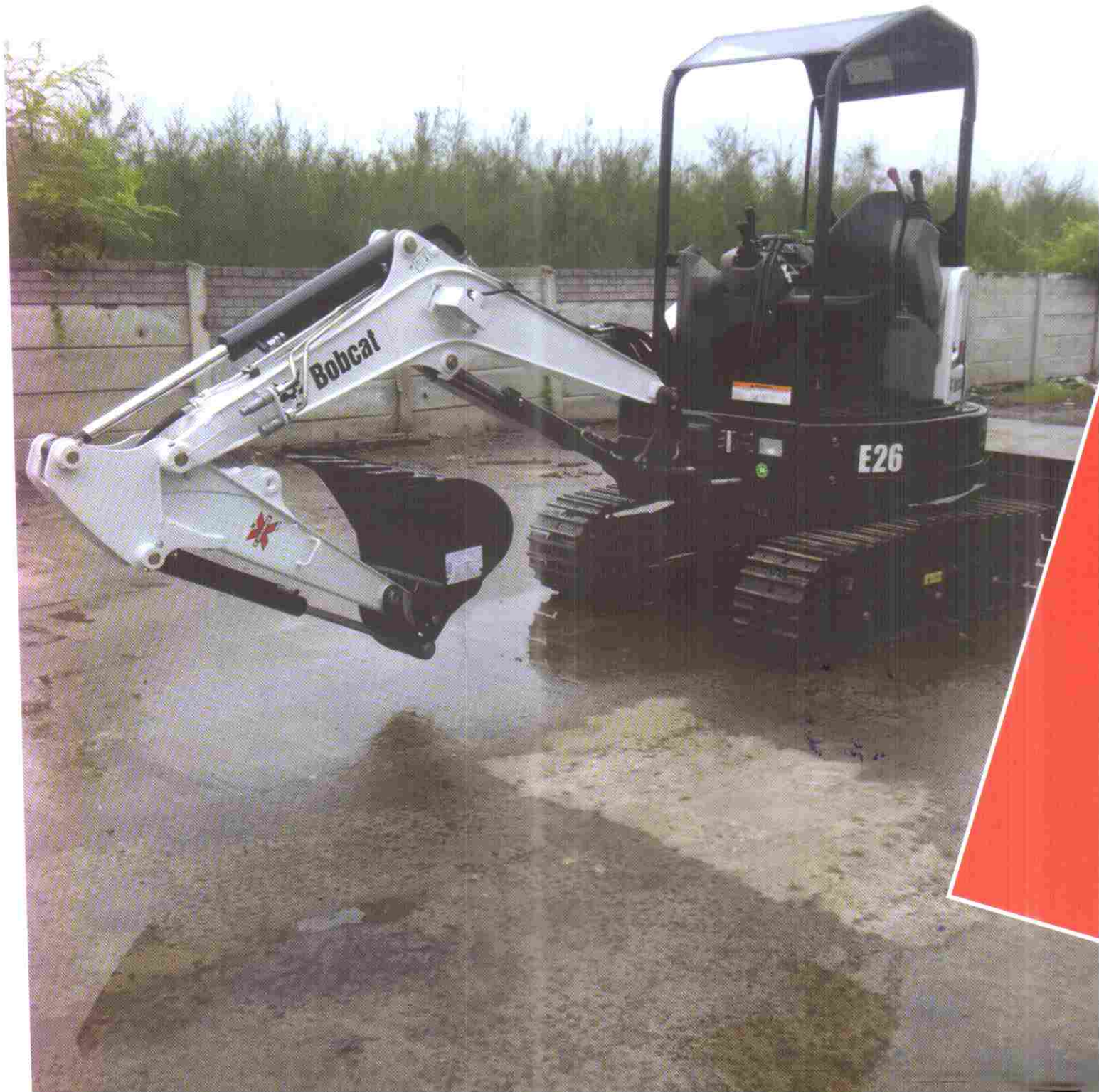




E26 | Compact Excavators





Standard Features

1515 mm dozer blade	Horn
300 mm rubber tracks	Hydraulic joystick controls
Auto shift travel	Lockable storage compartment
Auxiliary hydraulics with Quick Couplers	Radio/MP3 ready
Blade float feature	Retractable seat belt
Cab light	Suspension seat with high back
Clamp ready	TOPS/ROPS canopy
Control console locks	Two-speed travel
Cupholder	Work lights (boom and upperstructure)
Engine/hydraulic monitor with shutdown	Warranty: 12 months, 2000 hours (Whichever occurs first)
Fingertip auxiliary and offset hydraulic control	

Weights

Operating weight with ROPS canopy	2565 kg
Additional weight for cab with heater	130 kg
Additional weight for steel tracks	119 kg
Additional weight for long dipperstick	10 kg
Additional weight for add counterweight	183 kg

Engine

Make / model	Kubota / D1105-E2B-BCZ-2
Fuel / Cooling	Diesel / Liquid, forced circulation
Bore / Stroke	78.0 mm / 78.4 mm
Maximum power at 2400 RPM (SAE J1995)	15.5 kW
Maximum torque at 2400 RPM (SAE J1995)	71.2 Nm
Number of cylinders	3
Displacement	1.123 l

Performance

Digging force, stand. dipperstick	15800 N
Digging force, long dipperstick	13200 N
Digging force, bucket	22200 N
Drawbar pull	30200 N
Ground pressure with standard dipperstick and rubber tracks	25.5 kPa
Travel speed, low range	2.4 km/h
Travel speed, high range	4.6 km/h
(H) Overall length in travel position, long dipperstick	4864 mm
(P) Swing clearance, rear with additional counterweight (zero tail swing)	840 mm
(B) Maximum reach of working equipment, long dipperstick	4966 mm
(I) Maximum dump height, long dipperstick	3239 mm
(K) Maximum digging depth, long dipperstick	2890 mm

Hydraulic System

Pump type	Dual outlet variable displacement piston pump with gear pumps
Piston pump capacity	2 x 28.8 l/min
Gear pump capacity	19.2 + 6.5 l/min
Auxiliary flow	48.0 l/min
Port relief pressure for boom circuits	290 Bar

Fluid Capacities

Cooling system	4.6 l
Engine lubrication plus oil filter	5.1 l
Fuel reservoir	34.6 l
Hydraulic reservoir	14.7 l
Hydraulic system with bucket and dipper cylinder retracted, bucket on the ground, and blade down	25.0 l

Controls

Steering	Direction and speed controlled by two pilot-operated hand levers or two foot pedals
Auxiliary hydraulics	Electric switch in right joystick (left joystick for 2 nd auxiliary)

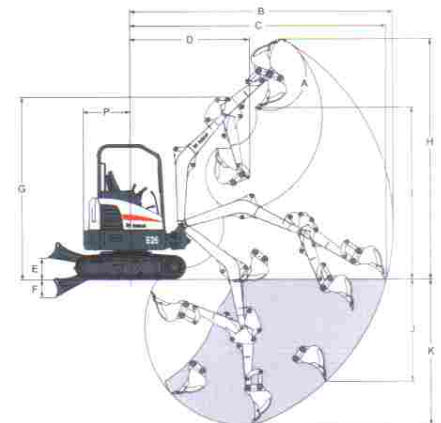
Slew System

Boom swing, left	60°
Boom swing, right	60°
Slew rate	9.3 RPM

Traction

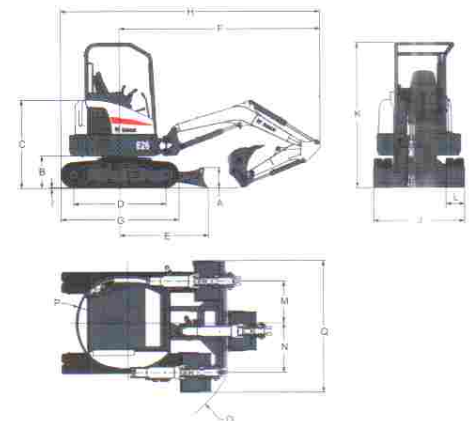
Track width	300 mm
Gradeability	30°

Working Range



(A) 185°	(E) 385 mm	(I) 3057 mm
(B) 4678 mm	(F) 315 mm	(J) 1809 mm
(C) 4553 mm	(G) 3246 mm	(K) 2582 mm
(D) 2132 mm	(H) 4272 mm	

Dimensions



(A) 330 mm	(G) 1965 mm	(M) 614 mm
(B) 537 mm	(H) 4326 mm	(N) 735 mm
(C) 1456 mm	(I) 25 mm	(O) 1661 mm
(D) 1543 mm	(J) 1515 mm	(P) 770 mm
(E) 1462 mm	(K) 2412 mm	(Q) 1949 mm
(F) 3345 mm	(L) 300 mm	

Options

Auto idle	AM/FM MP3 stereo radio
Heating (Cab with heater)	FOGS kit (Overhead guard)
Long dipperstick	Travel motion alarm
Additional counterweight	300mm Steel tracks
2 nd Auxiliary hydraulics	Beacon kit
Deluxe textile suspension seat	Left and right mirror kit
Boom safety valve with overload warning	Additional work light kit
Boom & arm safety valves with overload warning	Fuel filter with transparent water separator

Attachments

Auger	Hydraulic clamp
Grading bucket	Digging bucket
Hydraulic breaker	Tilt bucket / Swivel bucket



Doosan Infracore

Doosan Infracore India Pvt Ltd

3rd Floor, TNPL Building, 67 Mount Road, Guindy, Chennai - 600032, India

Ph: +91 44 42223900 Fax: +91 44 42223905

Email: marketingindia@doosan.com Website: www.bobcat.com www.bobcat.eu